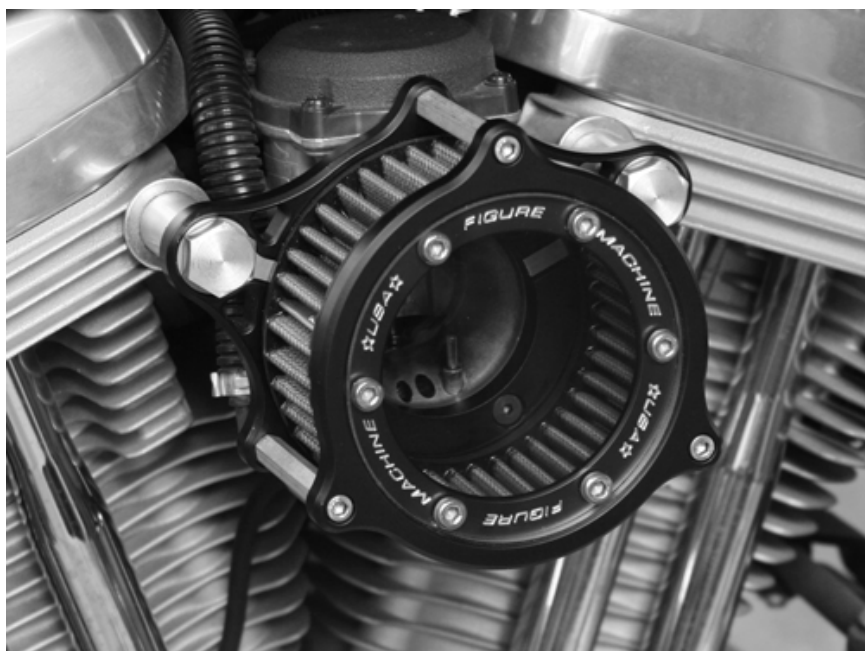




Figure Machine

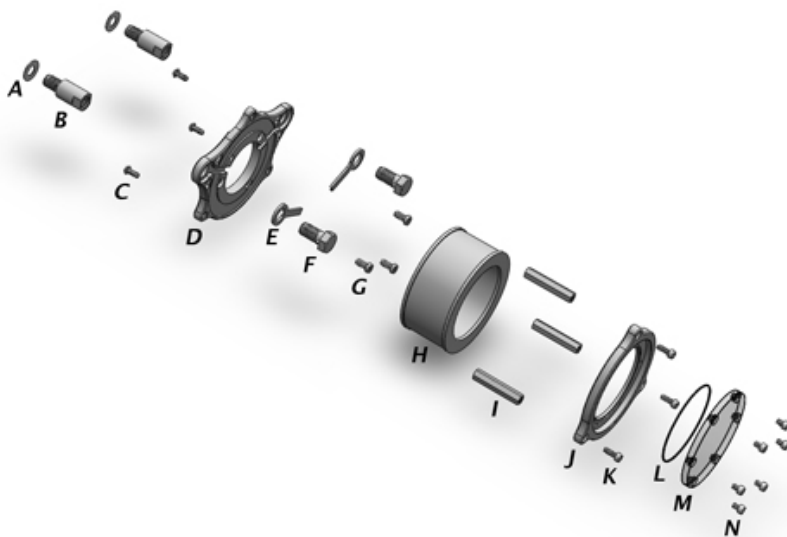
9208 Venture Ct – C9
Manassas Park VA 20111
Info@FigureMachine.com
www.FigureMachine.com

Installation Manual



XLFLOW VISION 4

XLFLOW VISION 4 EXPLODED VIEW



- A - 1/2" WASHER (2) **(FOR CARBURETED MODELS ONLY)**
- B - SPACER BOLT (2)
- C - BOLT; 10-32 x 1/2" BUTTON HEAD (3)
- D - BACK PLATE (1)
- E - KEY HOLE CHANNEL (2)
- F - BREATHER BOLT (2)
- G - BOLT; 1/4-20 x 1/2" SOCKET HEAD LOW (3)
- H - K&N FILTER HA-0300 (1)
- I - 10-32 x 2" – 5/16" ALUMINUM STANDOFF (3)
- J - FACE PLATE (1)
- K - BOLT; 10-32 x 1/2" SOCKET HEAD (3)
- L - RUBBER O-RING (1)
- M - CLEAR WINDOW (1)
- N - BOLT; 10-32 x 1/4" SOCKET HEAD (6)

Dear Customer,

Thank you for purchasing *Figure's* XLFLOW VISION 4 Air Cleaner Assembly. This Air Cleaner has been engineered to enhance the performance and appearance for the life of your bike. Proper installation is essential to your overall satisfaction, so please read these instructions before attempting to install. Exercise patience; these instructions are intended to assist even the most mechanically challenged.

Remember, if you are not 100% satisfied with our product, simply return it within 30 days of purchase for a complete refund.

We always love to see installed pictures, so we encourage you to email us your best!

(Send to Info@FigureMachine.com)

Package Contents (see illustration):

- A - ½" WASHER (2) **(FOR CARBURETED MODELS ONLY)**
- B - SPACER BOLT (2)
- C - BOLT; 10-32 x ½" BUTTON HEAD (3)
- D - BACK PLATE (1)
- E - KEY HOLE CHANNEL (2)
- F - BREATHER BOLT (2)
- G - BOLT; ¼-20 x ½" SOCKET HEAD LOW (3)
- H - K&N FILTER HA-0300 (1)
- I - 10-32 x 2" – 5/16" ALUMINUM STANDOFF (2)
- J - FACE PLATE (1)
- K - BOLT; 10-32 x ½" BUTTON HEAD (3)
- L - RUBBER O-RING (1)
- M - CLEAR WINDOW (1)
- N - BOLT; 10-32 x 1/4" SOCKET HEAD (6)

XLFLOW VISION 4 Installation

1) Remove Stock Filter Assembly

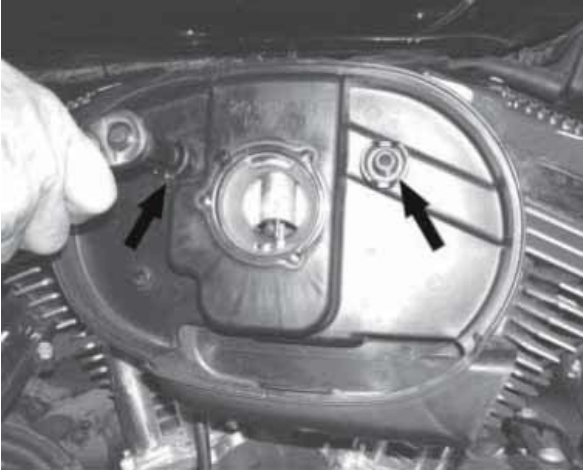
- 1.1) Remove the two 3/16 Allen Cap screws that secure the Filter Cover and Plate.



- 1.2) Remove the three T25 Torx screws that secure the stock filter. Remove the gasket from the stock filter and set aside for later use.



- 1.3)** Remove the stock breather bolts and throttle body bolts. On some models there will be vent lines being fed to the air filter assembly, remove these and re-route them to beneath the engine. Remove the stock breather box.

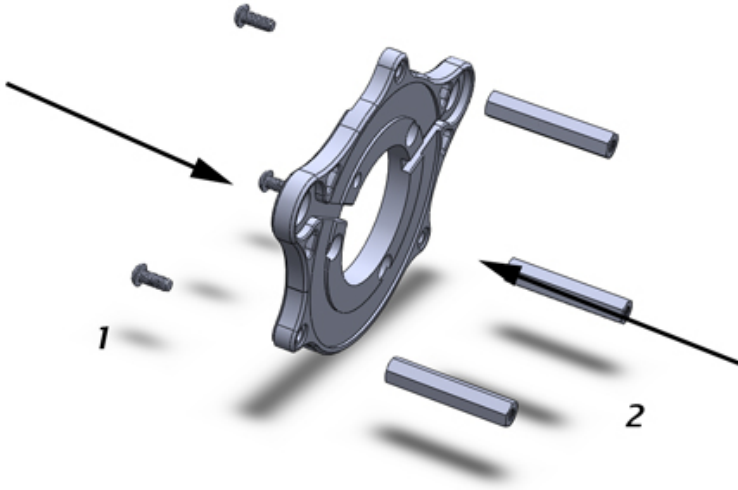


- 1.4)** Remove throttle body support (fuel injected models) by removing the bolt in the center.



2) PREPARE XLFLOW VISION 4 CLEAR BACK PLATE

- 2.1) Install the 10-32 x 2" hex standoffs to the backing plate using the button head 10-32 x 1/2" bolts.



3) PREPARE XLFLOW VISION 4 CLEAR FACE PLATE

- 3.1) Place the rubber O-ring in the groove in the face plate
- 3.2) Peel the protective sticker paper off of the clear window and place it (countersinks facing outwards) in the relief in the face plate.
- 3.3) **LOOSELY** thread the 10-32 x 1/4" bolts through the window and into the face plate.

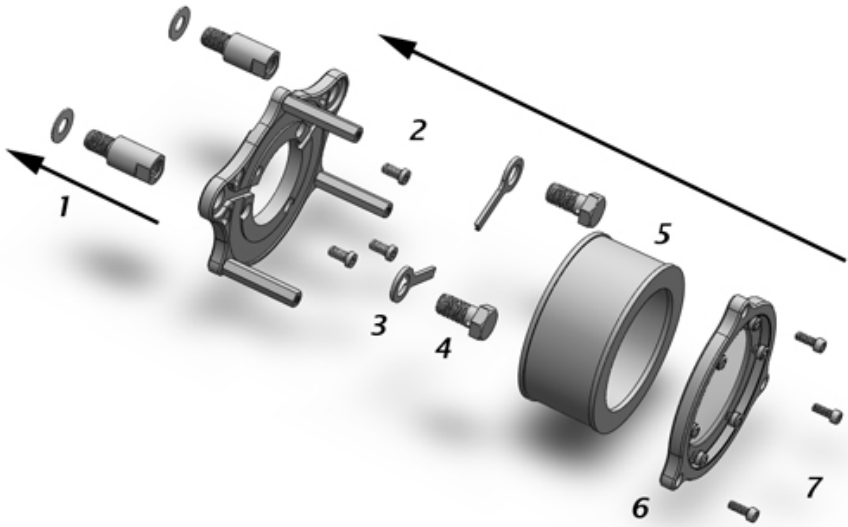
- 3.4) With all of the bolts **LOOSELY** installed in the face plate, begin to partially tighten the bolts in the order shown below, repeating until all the bolts are tight. This will ensure a seal between the O-ring and the window



4) INSTALL XLFLOW FILTER ASSEMBLY

- 4.1) Install a spacer bolt on each head. **On carbureted models place $\frac{1}{2}$ " washers on each spacer bolt.** Secure these bolts with a $\frac{5}{8}$ " wrench taking care to not over torque.
- 4.2) Finger tighten the backing plate with stock gasket to the throttle body using the $\frac{1}{4}$ "-20 x $\frac{1}{2}$ " low head bolts.

- 4.3) Install the key hole channels (with the machined groove facing toward the backing plate) in each passage of the backing plate.
- 4.4) Install the breather bolts (take care to not over torque) and then fully tighten the throttle body bolts.
- 4.5) Place the K&N filter in the groove of the back plate.
- 4.6) Align the face plate to sit flush against the standoffs
- 4.7) Secure the face plate with the 10-32 x 1/2" socket head bolts.



- 4.8) Stand back and enjoy! Please send any pictures and/or feedback to:
info@FigureMachine.com