



BAHN SHIFT LINKAGE COVER FOR TOURING

1097

THANK YOU FOR CHOOSING KÜRYAKYN!

PROTECT YOURSELF AND OTHERS FROM POSSIBLE INJURY AND PROPERTY DAMAGE OR LOSS. PAY CLOSE ATTENTION TO ALL INSTRUCTIONS, WARNINGS, CAUTIONS, AND NOTICES REGARDING THE INSTALLATION, USE, AND CARE OF THIS PRODUCT.

Table with 2 columns: Warning/Notice icons and text explaining the importance of reading instructions.

MAKE SURE THE FOLLOWING PARTS HAVE BEEN INCLUDED IN THE KIT:

- 1 BAHN Shift Rod Cover
1 Hardware Kit containing:
1 Screw Plate
4 #6-32 X 1/4" Socket Head Cap Screws
4 #6 Flat Washer
1 Installation Instructions

TOOLS SUGGESTED:

Set combination wrenches, set of hex wrenches

NOTICE: These installation instructions contain important information. Ensure that the end user receives this copy and is aware of its importance for future reference.

STEP 1: Read and understand all steps in the instructions before starting the installation. Park the motorcycle on a hard, level surface and turn off the ignition. Allow the engine and exhaust system to cool. Remove the main fuse.

WARNING: ACCIDENTAL VEHICLE START-UP COULD CAUSE DEATH OR SERIOUS INJURY, REMOVE THE MAIN FUSE BEFORE PROCEEDING.

WARNING: YOU WILL BE WORKING AROUND THE ENGINE AND EXHAUST SYSTEM DURING INSTALLATION. ENSURE THAT THE ENGINE AND EXHAUST SYSTEM HAVE FULLY COOLED TO PREVENT INJURY.

CAUTION: Working around the sharp edges of the cylinder-head fins exposes your hands to injury. Wear protective gloves to prevent serious injury.

CUSTOMER SERVICE
877.370.3604 (toll free)

INSTALLATION QUESTIONS
techsupport@kuryakyn.com
or call 715.247.2983

LIMITED WARRANTY

Kuryakyn warrants that any Kuryakyn products sold hereunder, shall be free of defects in materials and workmanship for a period of one (1) year from the date of purchase by the consumer excepting the following provisions:

- Kuryakyn shall have no obligation in the event the customer is unable to provide a receipt showing the date the customer purchased the product(s).
• The product must be properly installed, maintained and operated under normal conditions.
• Kuryakyn makes no warranty, expressed or implied, with respect to any gold plated products.
• Kuryakyn shall not be liable for any consequential and incidental damages, including labor and paint, resulting from failure of a Kuryakyn product, failure to deliver, delay in delivery, delivery in nonconforming condition, or for any breach of contract or duty between Kuryakyn and a customer.
• Kuryakyn products are often intended for use in specific applications. Kuryakyn makes no warranty if a Kuryakyn product is used in applications other than intended.
• Kuryakyn electrical products are warranted for one (1) year from the date of purchase by the consumer. L.E.D.'S contained in components of Kuryakyn products will be warranted for defects in materials and workmanship for 3 years from the date of purchase where as all other components shall be warranted for one(1) year. This includes, but is not limited to; control modules, wiring, chrome & other components.

• Kuryakyn makes no warranty of any kind in regard to other manufacturer's products distributed by Kuryakyn. Kuryakyn will pass on all warranties made by the manufacturer and where possible, will expedite the claim on behalf of the customer, but ultimately, responsibility for disposition of the warranty claim lies with the manufacturer.

ABOUT OUR CATALOG

For purchasing Kuryakyn® products, you can receive a complete catalog free of charge. Send the Proof-of-Purchase below with your address to: Kuryakyn 454 County Road V V Somerset, WI 54025-9031 Please indicate either Accessories Catalog for Harley-Davidson® or GL & Metric Cruisers.

Be sure to ask your local dealer about other Kuryakyn® products, the motorcycle parts and accessories designed for riders by riders.

©2005 Kuryakyn USA® All Rights reserved.



STEP 2 Refer to **PIC 1**. Remove the nut, lock washer and flat washer from the backside of the front shift arm; remove the front end of the shift rod from the shift arm. Save the hardware for later, it will be reused.

NOTE: The front Heim joint stud is longer than the rear Heim joint stud.

STEP 3 Remove the rear Heim joint stud from the rear shift arm.

STEP 4 Refer to **PIC 2**. Lay the shift rod in the BAHN Shift Linkage Cover. Slide the shift rod to the front end of the cover. Ensure that the jam nuts on the shift rod fit all the way in the groove in the cover.

It may be necessary to loosen one of the jam nuts, adjust the Heim joint until the jam nut fits in the groove, then tighten the jam nut.

STEP 5 Remove the adhesive backing from the included Screw Plate. Refer to **PIC 3**. Place the Plate over the recess in the back of the BAHN Cover; secure the Plate to the Cover with the included #6-32 Screws and #6 Washers. Leave the Screws loose until all four have been started in their threads; tighten the screws.

STEP 6 Refer to **PIC 4**. Carefully reinstall the shift rod in the reverse order it was removed. Take care to not scratch the BAHN Cover when tightening the fasteners.

STEP 7 Reinstall main fuse. Ensure proper function of all shifting functions **BEFORE** motorcycle start-up.

NOTICE

If further shifter adjustment is necessary, consult the service manual for your specific model of motorcycle.

WARNING

THE END USER'S SAFETY DEPENDS UPON PROPER INSTALLATION OF THIS PRODUCT. IF A STEP IN THIS SET OF INSTRUCTIONS IS NOT WITHIN YOUR CAPABILITIES OR YOU DO NOT HAVE THE CORRECT TOOLS, HAVE YOUR DEALER PERFORM THE PROCEDURE. IMPROPER INSTALLATION OF THIS PRODUCT COULD RESULT IN DEATH OR SERIOUS INJURY.

NOTICE

It is the end user's responsibility to ensure that all of the fasteners (including pre-assembled) are tightened before operation of the motorcycle. Küryakyn will not provide warranty coverage on products or components lost due to improper installation or lack of maintenance. Periodic inspection and maintenance are required on all fasteners.

TIPS FOR PROPER CARE:

Your new BAHN product is made out of anodized aluminum. Anodized aluminum requires special attention when cleaning. Some cleaning products or procedures can actually remove the anodized treatment which will lead to pitting in the aluminum.

Thoroughly clean the BAHN product often with a soft cloth, mild soap and water. Regular cleaning keeps contaminants from building up.

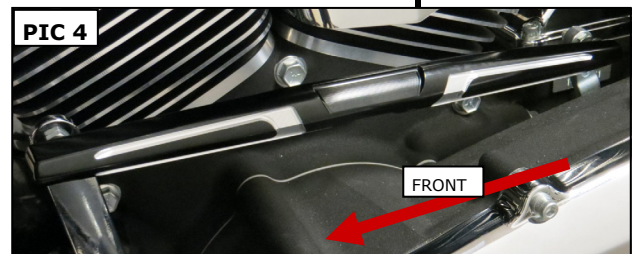
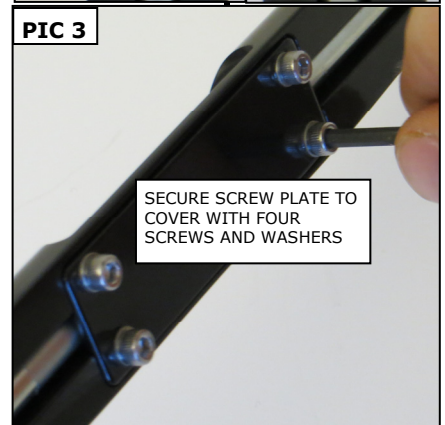
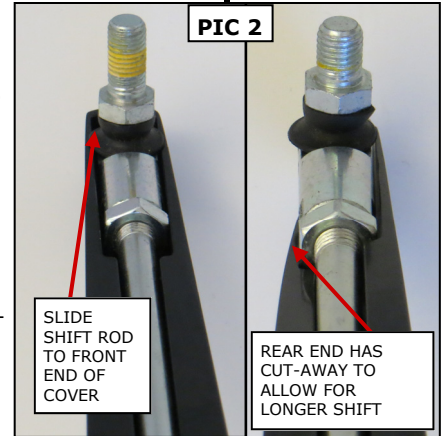
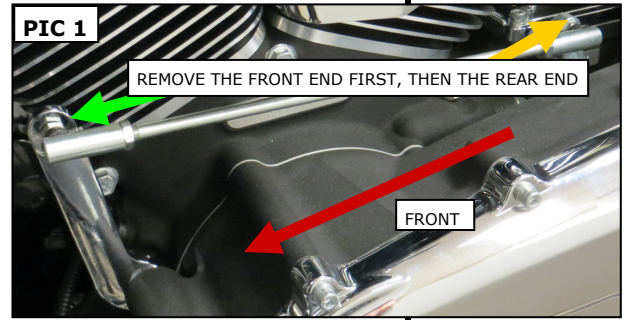
Rinse thoroughly with FRESH water.

Use only metal protection products that are formulated for anodized aluminum.

DO NOT USE bleach or chlorides to clean the BAHN product.

DO NOT USE products containing abrasives to clean the BAHN product. **Never** use steel or brass wool, wire brushes, polishing wheels, rubbing or polishing compounds on the BAHN product.

DO NOT USE concentrated alkaline based solutions to clean the BAHN product. Many detergents are alkaline based.



Ride On!